



## This Issue

- WQ Officer & Chairman Reports
- Virtual Quilt Shows, Lectures, & Classes
- Call for Entries
- Neighborly Guild Calendar



## Westside Quilters Philanthropy Day November 2<sup>nd</sup>

10AM to 3PM,  
LAPD Pacific station  
12312 Culver Blvd, Los Angeles

Access & Parking instructions on page 3



## Upcoming Workshops & More



- **WQ Philanthropy Day - November 2<sup>nd</sup>**
- **Holiday Tea - December 7<sup>th</sup>** – details to follow
- **Saturday, January 4, 2025.** Share Your Favorite Notions + Sew In
- **February Quarterly Meeting** Libby Williamson presents her lecture, 3-D Quilts. Additionally, Libby will lead a workshop on Saturday, February 8<sup>th</sup> – Enhance the Vase.



### Thanksgiving Day

November 28<sup>th</sup>

*“National Day” pictures are actual quilts.*



# PRESIDENT'S MESSAGE

## This and That

I couldn't really think of what to write this month, so I went to a folder I have that has quotes from various people to help inspire me. And I found this from Isabel Allende, illustrated by Mary Englebreit:



It seemed a good place to start. It's something that occurs in every creative field - be it writing, illustrating, painting or quilting. There are days that nothing seems to work or your great idea isn't so great after all. But if you keep on with it, show up, then you might find that one thing that might lead you to a good solution.

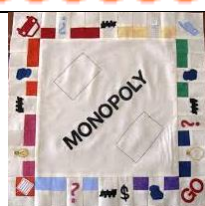
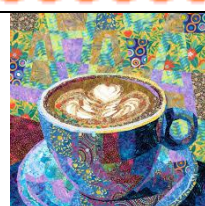

Or you could take a break, go out and discover inspiration in the natural world. Another quote from my folder from Desmond Tutu:

*"We were made to enjoy music, to enjoy beautiful sunsets, to enjoy looking at the billows of the sea and to be thrilled with a rose that is bedecked with dew... Human beings are actually created for the transcendent, for the sublime, for the beautiful, for the truthful... and all of us are given the task of trying to make this world a little more hospitable to these beautiful things."*

Or see an exhibition. Visit the Mingei Museum in Santa Diego to see their show - "Blue Gold: The Art and Science of Indigo" and marvel at all the amazing work from all over the world. It will be there until mid-March 2025.

Just keep on keeping on and you might even finish your (my) newsletter article!

Terrie Dorio  
WQ President

<p><u>National Play</u> <u>Monopoly Day</u> Nov. 19<sup>th</sup></p>		<p><u>National</u> <u>Cappuccino Day</u> November 8<sup>th</sup></p>		<p><u>National Fast</u> <u>Food Day</u> November 16<sup>th</sup></p>	
--	---	--	--	--	---



WESTSIDE QUILTERS



# Philanthropy Day November 2<sup>nd</sup>

LAPD Pacific Division Police Station  
12312 Culver Blvd, Los Angeles 90066  
(Not at LAPD West Traffic)  
(parking details below\*\*\*)

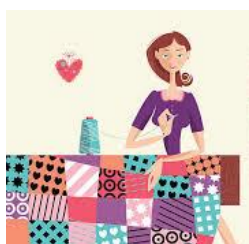
It looks like another year has come and gone and its already time for our annual Philanthropy sewing workshop. We are planning this one on November 2nd at the **Pacific Police station in Los Angeles**. We hope you all will join us for a relaxing day of sewing. Please bring your lightest sewing machine and material and make something wonderful. If you are in doubt as to what to make you can look on our website as we have a few ideas that have been posted in our last few newsletters.

It's probably a good idea to bring your lunch and enjoy the company of other Westside members. We will provide coffee, tea and of course sweets. The hours are 10AM to 3PM, November 2, 2024 at the Pacific station located at 12312 Culver Blvd, Los Angeles. There will be instructions for access to the parking inside the station lot.

We look forward to seeing you and seeing what you will be making. If you have any questions please contact either Luann or Virginia.

\*\*\*We can park in the main parking lot which is accessed on Culver Blvd. Please pull forward to the gate & press the intercom button. Let the front desk know you are with us & they will open the gate. If you have any questions you can call Pat (213) 494-7586 or Lisa (310) 902-5821 and we will be able to assist you.

Luann, Virginia and Roberta



National Philanthropy Day  
Nov. 15<sup>th</sup>



National Chicken Lady Day  
Nov. 4<sup>th</sup>



World Television Day  
Nov. 21<sup>st</sup>



# Westside Quilters Annual Holiday Tea...



**Saturday, December 7<sup>th</sup>**

**2:00pm – 4:00pm**

**Our Holiday Tea will be IN-PERSON!**

Outside (weather permitting)

**Location details to follow**



Plans are being made for our annual **Holiday Tea** on **December 7<sup>th</sup>** from **2-4 PM!** Location details to follow!!!

Please bring sweet or savory finger foods to share (nothing that needs utensils). We will provide tea and paper goods. If you'd like, bring one quilt or other handmade project that you made this past year to share with the group.

We will have a Quilters' Showcase to share our quilts. We are looking forward to seeing you all in person to celebrate this past year together and wish each other a happy 2025!!

Program Committee



Members put on your hats and your pearls and join us for some Holiday Cheer!

**November 5<sup>th</sup>**



## *Leadership.....*

### **Traveling Quilter**

*By Pat Karasick*

I was able to attend the third annual Airing of the Quilts at Gee's Bend celebrating the tradition of displaying quilts in this historical community. Many of the quilts displayed were made by third generation quilters. I have been enamored by the designs ever since I attended an exhibit in San Francisco at the Fine Arts Museum in 2006. The cocktail table size book, "The Quilts of Gee's Bend" created in 2002 printed by Tinwood Books gives a detailed history of the land and enslaved people who have lived there for generations.



I went to see the quilts and talk with quilters. I had quite a few questions that non-quilters had not answered. My husband and I were on the first ferry on a foggy morning at 7:00 A.M. Kim V. Kelly, Executive director for the Freedom Quilting Bee Legacy gave us a ride up the hill from the ferry plus a few tips. Go get tea cakes at booth #23, my friend Lue Ida McCloud makes the best. She was also a magnificent quilter. My husband thought her quilts were machine quilted, nope, all hand done. Tea cakes are like thin cornbread sweetened with sugar and spices. Every family's recipe is different. Great way to start the morning.

The Ferry Welcome Center had a display of Mary Lee Bendolph's quilts and history. Mary is one of Gee's Bend most accomplished quiltmakers and created the 2024 featured quilt. She can trace her ancestry to the first enslaved people brought to Gee's Bend in 1816.

We had booked the first mini bus tour before leaving Los Angeles. Fifteen non-quilters and I set off with our tour guide, a great grandson of a quilter. He had been gifted two quilts which he proudly showed us. We stopped at some of his cousins' houses. One was an Army veteran, who regaled us with stories about how it was to grow up there. He also displayed some of his grandmother's quilts. She made a big variety of quilts, like some of us. The older quilts frequently had pieces of old jeans and work shirts in them.

Another stop was a cousin who was a quilter. She and I bonded when we discussed how we liked to hand quilt, both of us agreeing in our laps was more comfortable than on a frame 40-42 "off the ground that I had seen in pictures. She machine pieces her tops when she has time after tending to the cattle and her garden filled with cabbage and other vegetables. She complained about the drought. No marked patterns, just how she feels with white thread. I gave her some Bottom Line thread for her time in exchange for a hug.

Another stop was the Quiltfolk booth where a quilter offered these tips. Use whatever white thread you can buy at Walmart and a sturdy needle. Good advice. We are so lucky to have local quilt shops to buy quality thread and materials.

Where was the textile factory that the scraps came from? Selma, a good 45-50-minute car ride away. Gee's Bend, or Boykin is really a peninsula, not an island. The ferry has only been recently reactivated in 2006.

There was a huge installation by Oklahoma-based textile artist Rachel Hayes, who made her first trip to Gee's Bend. She collaborated with artists in the community and plans on doing other projects.

Gee's Bend is still a destination even when the festival is not going on. The ten quiltmakers whose quilts were featured in the U.S. Postage stamps issued in 2006 have life size reproductions of their quilts on wooden signs outside their homes with a story of their lives and quilts. It is possible to drive around although some of the roads are still dirt.



Wooden sign for quilter's house



Lue Ida McCloud

Pat Karasick  
Vice-President

## Membership.....

Welcome to our newest member Carol Gray.

If you have any friends or family who are interested in quilting, please let them know about our guild & encourage them to attend a meeting or class & join us! Guests are welcome to join us for one of our quarterly meetings for no charge.

Looking forward to seeing you November 2<sup>nd</sup> for our Philanthropy sew-in.

Lisa Drew  
Membership Chair

<p><u>Universal Children's Day</u> Nov. 20<sup>th</sup></p>		<p><u>National Family PJ Day</u> November 14<sup>th</sup></p>		<p><u>National Sandwich Day</u> November 3<sup>rd</sup></p>	
<p><u>World Vegan Day</u> November 1<sup>st</sup></p>		<p><u>National Cake Day</u> November 26<sup>th</sup></p>		<p><u>National Mason Jar Day</u> Nov. 30<sup>th</sup></p>	

# WQ Programs.....

By Kathryn Pellman

## Upcoming Programs

We have an exciting year of programming for 2025 starting in February with [Libby Williamson](#) presenting her lecture, *3-D Quilts*, followed her workshop, on Saturday, February 8<sup>th</sup> — *Enhance the Vase* where we will stitch designs on top of black and white fabrics, then add washes of acrylic paint. The pieces will then be layered on top of canvas and enhanced with special bits of vintage linen, lace, and assorted fabrics. And, if you don't want to bring your sewing machine to class, you can finish your vase when you get home.

Click [here](#) to sign up now to get the Early Bird rate of \$70. Or, if you prefer, you can make your payment to Westside Quilters on Zelle. Please note that there is a \$35 Materials Fee payable at the workshop which includes all fabrics and materials.

Check out our [website](#) to see all our 2025 programs!

Your Feedback Is Important! I Want To Hear From You! I would appreciate it if you could take a few minutes to email me at [Programs@WestsideQuiltersLosAngeles.org](mailto:Programs@WestsideQuiltersLosAngeles.org) with your feedback and suggestions on anything to with programs or anything else you would like to share.

**Committee Members Needed!** I cannot do this job alone. Please consider volunteering to be on the Programs Committee. It's a great way to bring in speakers and workshops that you are interested in, lots of fun and a great way to meet other guild members.

Kathryn Pellman  
Programs Chairperson



<p><u>National Pickle Day</u> November 14<sup>th</sup></p> 	<p><u>American Indian Heritage Day</u> November 29<sup>th</sup></p> 	<p><u>National Button Day</u> November 16<sup>th</sup></p> 
<p><u>National Hiking Day</u> November 17<sup>th</sup></p> 	<p><u>World Philosophy Day</u> Nov. 21<sup>st</sup></p> 	<p><u>National Redhead Day</u> November 5<sup>th</sup></p> 

## Treasurer

Karynn Dittmar, Treasurer

<b>OPENING BALANCE AS OF 5/25/24</b>		<b>5383.14</b>
<b>INCOME</b>		
Membership Dues / Donations	2335.00	
Workshop Fees	1525.00	
Guest Fees	0.00	
Fabric Sale Fundraiser	0.00	
<b>TOTAL INCOME</b>		<b>3860.00</b>
<b>EXPENSES</b>		
Workshop Expense	751.30	
General Meeting Expense	900.00	
Charitable Contributions	0.00	
Bank Adjustment	0.00	
Administrative Expenses	0.00	
Membership Expenses	50.00	
SCCQG Insurance	0.00	
Website	269.93	
PO Box Rental	256.00	
Philanthropy / Ed. Expense	0.00	
Printing / Promotion / Admin.	0.00	
Square Up/Pay Pal Fees	42.92	
Government Fees	45.00	
<b>TOTAL EXPENSE</b>		<b>2315.15</b>
<b>NET INCOME</b>		<b>1544.85</b>
<b>CLOSING BALANCE as of 10/25/24</b>		<b>6927.99</b>

## Website and Social Media:

All the photos from the October 5th Quarterly Meeting and the Quilters' Showcase quilts are up on the WQ website at [www.westsidquilters;osangeles.org](http://www.westsidquilters;osangeles.org). Some wonderful work! Also, my continual plea for photos for the Weekly Update and Social Media to be sent to either [westsidequilters@yahoo.com](mailto:westsidequilters@yahoo.com) or [swrightquilts@gmail.com](mailto:swrightquilts@gmail.com).

Sally Wright. Website and Social Media Manager



Barbara Marom-Pollack	November 2
Prima Casetta	November 4
Sandra Ray	November 12
Karen Rakita	November 15
Nancy King	November 16
Carol Busch	November 22



**BETTER  
CONVERSATIONS  
WEEK**

*Week of Thanksgiving*



## ***Calls for Entry October 2024***

Continuing our notifications for ways to display your quilts and textile pieces to a wider audience... For some great information from a veteran on how to get your work shown see this blog entry from Sue Bleiweiss <https://suebleiweiss.blog/2018/06/14/getting-your-work-out-there/>

I also recommend this blog post from Lyric Kinard on how to choose venues to display your work - <https://lyrickinard.com/2019/05/showing-your-work-choosing-venues/>

Here are some suggestions for quilt entry photography from International Quilt Festival.

### **PHOTOGRAPHING YOUR QUILT FOR SUBMISSION**

- Having a great photo of your quilt - straight on, in focus, not on a bed or held up showing hands and feet, super important. There is lots of great info on quilt photography on line. Google!

Entering shows is not difficult, but to begin here are a few guidelines:

- Always make sure you read everything in the call including the calendar, requirements, rules, etc.
- Especially the rules! Will save headaches and disappointment later on.
- Keep a record on your entries so you won't be caught with a quilt needing to go two places at once. Having to remove a quilt from a show or exhibit because you misread the exhibition dates is a no-no. Ask me how I know...
- Don't be intimidated or depressed by a rejection! There are lots of different reasons why a quilt doesn't fit into a specific show. It is usually not because your quilt is bad!

The calls below are just a sample of the many opportunities out there. For more search "Fiber Art Calls for Entry" or "Quilt Calls for Entry"

### **Here are some calls...**

**AQS Quiltweek Paducah 2025** - Paducah Kentucky. April 23 -26, 2025.

<https://contest.americanquilter.com/>

*Entry deadline November 7, 2024*

**Botanicals** (Fiber Art Now Magazine & Denver Botanic Gardens, CO) May 18 - Sep 28, 2025

Flowers, plants, trees . . . Nature's bounty. Show us how they help bring your art to life. Be inspired by your surroundings. Be creative; be colorful (or not); be innovative. Artwork must include fiber or fiber-related techniques. The exhibition will be juried by the *Fiber Art Now* creative team and will be featured in the Spring 2025 issue of *Fiber Art Now*. Selections from the exhibition in print will be eligible for the onsite exhibition at the [Denver Botanic Gardens](https://www.denverbotanicgardens.org/), May 18 through September 28, 2025.

*Entry Deadline December 6, 2024 (Opens November 1)* <https://www.fiberartnow.net/calls/>

### **Sacred Threads Call for Entry:**

Sacred Threads is excited to announce our call for entry for the 2025 Sacred Thread Exhibit in Indianapolis AND its Preview Travel Exhibit. The Preview Travel Exhibit will debut in Houston at the 2024 International Quilt Festival and then continue to travel throughout the summer of 2027. All pieces in the Preview Travel Exhibit will be shown at the main exhibit in Indianapolis.

As Sacred Threads transitions to a new team and location, we want to maintain the momentum of our travel exhibit and other venue opportunities. Therefore, our 2025 Travel Exhibit will debut before the main Indianapolis Exhibit.

We will open the call for entries in January of 2024.

**Entry Deadline – January 10, 2025.**

For More Information: Questions regarding exhibit: Barb Triscari [betoncat@betoncat.com](mailto:betoncat@betoncat.com) or Lisa Ellis [lisa@ellisquilts.com](mailto:lisa@ellisquilts.com).

**Indiana Heritage Quilt Show**

[Indiana Heritage Quilt Show \(ihqs.org\)](http://ihqs.org)

March, 2025

Entry Deadline February 10, 2025

**AQS Quilt Week - Grand Rapids, August 20-23, 2025**

[American Quilter's Society - AQS Quilt Contests](http://AmericanQuilter.com)

Entry Deadline March 27, 2025

And more coming soon for International Quilt Festival Houston 2025.

Questions?

Sally Wright [sally@sallywrightquilts.com](mailto:sally@sallywrightquilts.com)



***At Home and Surfing the Internet & some venturing out***

“Blue Gold: The Art and Science of Indigo” at the Mingei Museum in Santa Diego’s Balboa Park. It will be there until mid-March 2025, 10am to 5pm.

**Pilgrim Place Festival:** November 8 and 9, 10:00 am - 4:00 pm. Admission is free! On the Pilgrim Place campus, 625 Mayflower Road Claremont, CA 91711. Artisan booths including stained glass, woodworking, silver jewelry, weaving, knitting, ceramics, and more! Fabrications Booth has 25 bins of rolled fabric along with trims, tools, notions, hundreds of patterns, and countless quilting and needlework books for sale at bargain prices! All these sewing supplies are in addition to gorgeous, handcrafted quilts, table runners, banners, doll clothes, children's toys, and many fabulous gifts!

**See the Speaker Calendar of the Southern California Council of Quilt Guilds for additional events.** Go to [www.sccqg.org](http://www.sccqg.org) scroll down to the bottom of the homepage and click on the box “Speakers” and see other SCCQG guilds and speakers into 2024

<p><u>National Candy Day</u> November 4<sup>th</sup></p>		<p><u>World Toilet Day</u> November 19<sup>th</sup></p>		<p><u>National Drummer Day</u> November 15<sup>th</sup></p>	
<p><u>National Homemaker Day</u> Nov. 3<sup>rd</sup></p>		<p><u>America Recycles Day</u> November 15<sup>th</sup></p>		<p><u>National Homemade Bread Day</u> Nov. 17<sup>th</sup></p>	



## ***A NEIGHBORLY GUILD CALENDAR***

<b>November 2024</b>	
November 2 <b>Westside Quilters</b> <a href="http://www.WestsideQuiltersLosAngeles.org">www.WestsideQuiltersLosAngeles.org</a>	<u>Philanthropy Day</u>
November 6 <b>Santa Monica Quilt Guild</b> <a href="http://www.santamonicaquiltguild.org">www.santamonicaquiltguild.org</a>	<u>Anne Sonner</u> <u>Lecture: "New Quilts from Vintage Bits"</u> "
November 10 <b>San Fernando Valley Quilt Guild</b> <a href="http://www.sfvqg.net">www.sfvqg.net</a>	Karen Van Den Brink Workshop: Reverse Appliqué Workshop
November 16 <b>Glendale Quilt Guild</b> <a href="http://www.glendalequiltingguild.org">www.glendalequiltingguild.org</a>	<u>Elke</u> Workshop: T-Shirt Workshop
November 17 <b>African American Quilters of Los Angeles</b> <a href="http://www.easysite.com/aaqla">www.easysite.com/aaqla</a>	<u>Meeting</u> – third Sunday of the month
November 19 <b>South Bay Quilters Guild</b> <a href="http://www.southbayquiltersguild.org">www.southbayquiltersguild.org</a>	<u>Teresa Duryea Wong</u> Lecture: "Stories of Survival: Native American Quilts 1880-2022"
November <b>LA Modern Quilt Guild</b> <a href="http://www.LAMQG.org">www.LAMQG.org</a>	Retreat
<b>December 2024</b>	
December 4 <b>Santa Monica Quilt Guild</b> <a href="http://www.santamonicaquiltguild.org">www.santamonicaquiltguild.org</a>	Holiday Gathering
December 7 <b>Westside Quilters</b> <a href="http://www.WestsideQuiltersLosAngeles.org">www.WestsideQuiltersLosAngeles.org</a>	<b>Holiday Tea</b>
December 9 <b>LA Modern Quilt Guild</b> <a href="http://www.LAMQG.org">www.LAMQG.org</a>	Meeting & Holiday Party
December 10 <b>South Bay Quilters Guild</b> <a href="http://www.southbayquiltersguild.org">www.southbayquiltersguild.org</a>	Holiday Party
December 12 <b>Glendale Quilt Guild</b> <a href="http://www.glendalequiltingguild.org">www.glendalequiltingguild.org</a>	<u>Meeting</u>
December 21 <b>African American Quilters of Los Angeles</b> <a href="http://www.easysite.com/aaqla">www.easysite.com/aaqla</a>	<u>Meeting</u> – third Sunday of the month
December ?? <b>Simi Valley Quilt Guild</b> <a href="http://www.simivalleyquiltguild.org">www.simivalleyquiltguild.org</a>	<u>TBD</u>
December <b>San Fernando Valley Quilt Guild</b> <a href="http://www.sfvqg.net">www.sfvqg.net</a>	<u>Dark</u>

National Camp Day  
November 19<sup>th</sup>



## Westside Quilter Board meeting – 29 September 2024

Board members meeting at Dittmar residence or connected by Zoom: Sonja Daniel, Karynn Dittmar, Terrie Dorio, Lisa Drew, Luann Jaffe, Pat Karasick, Virginia Marshall, Debbie Nussbaum, Kathryn Pellman and Sally Wright. Not present: Roberta Walley

**President** Dorio called meeting to order at 12:32 pm and asked approval of prior Minutes – so moved Luann Jaffe, seconded Terrie Dorio, followed by board approval. Terrie obtained a personal Zoom account which will be the one used by the Guild. She asked for someone to contact Julia McLeod with pertinent information regarding the October 4<sup>th</sup> meeting. Pat Karasick volunteered.

**Vice President** Pat Karasick reported on the Jean Impey workshop which went well at the Venice Police Community Room. She listed various incurred costs. Reimbursement will follow. She noted that SCCQG has asked for quilts for the northern fire victims. She will write a brief article for the Newsletter giving information on where, what, and how members can contribute if they wish.

**Treasurer** Karynn Dittmar reported a bank balance of \$6700.59.

**Membership** Lisa Drew reported a total of 45 members (revised to 49). A discussion followed regarding increasing membership. Kathryn Pellman will devise a postcard listing speakers and workshops for 2025 which could be left at various locations such as Sewing Arts. She will report back as to costs.

**Programs** Kathryn Pellman reported on 2025 plans: January – Sew-In with members show/tell their two favorite notions/tools; February – Libby Williamson workshop; March – Make IT & Take It Sew-In; April – Cathy Perlmutter workshop; May – Jamie Davis speaker and possible workshop; June – Sew In; July – dark; August – Fern Royce (*One Thing Leads to Another*); September – maybe a local teacher; October – Lynn Koolish (*All about Fabric Dying*); November – Philanthropy Sew-In; December – Tea. Youngmen Lee scheduled for February 2026. Kathryn would like 15 minutes prior to the October 4<sup>th</sup> speaker to show members a presentation and get their feedback on the proposed programs. Board agreed on price points for Williamson workshop— \$80 regular/\$70 Early Bird (3 weeks before workshop)/\$60 for signups at October 4<sup>th</sup> meeting. November 2<sup>nd</sup> Philanthropy Sew-In will be at the Pacific Police station at 12312 Culver Blvd. from 10-3; Bring lunch. Karynn Dittmar suggested Sue Rasmussen (with whom she recently spoke) for a trunk show/lecture.

**Philanthropy** Luann Jaffe reported we have lots of quilts & placemats for Meals on Wheels goes on.

**Newsletter** Debbie Nussbaum needs article for November Sew-In ASAP for October edition.

**Website** Sally Wright needs updated roster and programs info. Impey workshop photos are up.

**New Business:** None. **Next meeting:** November 3<sup>rd</sup> at 12:30 pm at Karynn Dittmar. Meeting adjourned at 1:35 pm.

Respectfully submitted,

Sonja Daniel, Secretary

**Day of the Dead**  
November 1<sup>st</sup>



**Westside Quilters Quarterly Meeting- Saturday, October 5, 2024**  
Hybrid meeting at Sewing Arts Center, 2306 Corinth Ave., LA, CA 90064

**President** Terrie Dorio opened the meeting at 10:03 A.M. 9 on Zoom, 19 in person, 1 guest, 2 new members

Minutes of August were approved, motion made by Luann Jaffe, seconded by Marianne Simpson.

**Vice-President:** No report

**Secretary:** Sonja Daniel is away, so Pat Karasick will be taking the minutes. Karynn Dittmar will take photos of Quilters' showcase.

**Treasurer:** Report is in the newsletter

**Membership:** Lisa Drew is ill. Please remember to get a stamp from Karynn so that you can get a 20% discount shopping after the meeting.

**Philanthropy:** Luann announced that there will be a working /sewing day in the Community Room of the Pacific Community Police Station on 12312 Culver Blvd. Saturday, November 2, 10:00 A.M. -3:00P.M. Please bring a donation project to work on and your lunch. There are restaurants within walking distance. Coffee and tea service will be available. This year, you will be able to drive into the Police station and park in front of the gray trailer that houses the Community Room. We will have tables and chairs available. We will set up cutting and ironing stations.

Luann has quilts at home ready to be donated. She will wait until Virginia Marshall returns to help distribute. Ronald McDonald House is a possibility.

**Newsletter:** Debbie Nussbaum welcomes any member to write an article about travels, quilt shows visited, new classes taken.....

**Website:** Sally Wright requests interesting website links, and of course photos of your projects be sent to her email: [sally@sallywrightquilts.com](mailto:sally@sallywrightquilts.com)

**Programs:** Kathryn Pellman shared her Powerpoint about upcoming events. There will be a workshop with every quarterly meeting lecture. She elicited audience participation about several subjects. Project for Libby Williamson's workshop with the most votes was Enhance the vase. She offered a special fee for members who signed up at the end of the meeting. Members indicated that they would like to take 3-4 workshops a year. Sunday is an option for out-of-town artists to present their workshop. 11 members were interested in taking a 3-hour workshop with Cathy Perlmutter.

Kathryn is requesting assistance in making programs exciting. Please email her if you are interested in creating a Westside Quilters Postcard, securing contracts, and researching additional teachers.

[Kathryn.Pellman@gmail.com](mailto:Kathryn.Pellman@gmail.com)

Pat Karasick will manage sites for workshops.

Check the website for information and fees.

**Upcoming dates:**

February 1, 2025 – Libby Williamson- Fiber artist- Registration is open. Early bird special is \$70.00 plus material fee paid to Libby. Regular fee is \$80.00 plus material fee.

May 3, 2025- Jamie Davis- History of Baltimore Album Quilts

August 2, 2025 Fern Royce- String quilting

**Quilter's Showcase:**

Backdrop: Karynn Dittmar's Garden Down Under, pattern by Irene Blanck, BOM -The Quilt Show 2021. She hand appliques the pieces with 80 wt. thread, using Quilter's Select Print and Fuse in back of the shapes.

In order of appearance:

- **Karynn Dittmar:** Wendy Williamson pattern made in a class at Empty Spools with Barbara Black

- **Roberta Walley:** Original design from her photo of Grand dog, Hazel. She enlarged it and used Misty Fuse to adhere the fabrics to form Hazel's portrait.
- **Prima Casetta:** 6 Blocks done from Jean Impey's workshop to be made into a cat quilt for her sister's cat.
- **Luann Jaffe:** Log cabin set in a lightening pattern, made from a kit.
- **Debbie Nussbaum:** Pillow with chevrons inspired by Victoria Findley Wolfe. Took a class with Tina Curren who revealed the secret to chevrons.
- **Carol Busch:** Used a panel of Little Red Riding Hood in a class with Sylvia Davis, surrounded by Stack and Wack blocks.
- **Terrie Dorio:** Completed her Bertice Potter quilt from the Quiltfolk virtual trip to the Lakes District of England.
- She also completed her ombre log cabin done in a class at Empty Spools with Jennifer Sampou using her fabrics.
- **Sherry Kleinman** showed her mosaic crocheted purse. She learned the stitch from Tinna in Iceland who sells her patterns on Revelry. She said the instructions were easy, row by row and color by color. Tinna has 95,000 followers on Facebook and YouTube.
- She bought the hardware on Etsy.
- **Pat Karasick** showed Life is a Beach, hand embroidered, beaded, pieced and quilted in 8 hours at Sewing Arts on the rentable Bernina long arm.

**Guest speaker:** Terrie Dorio introduced Julia McLeod from the Bay area, the topic was: Everything But Cotton. Julia has a textile background and a long tradition of tailoring going back to her Great Grandfather. Fabric has changed in the last twenty years, there are many more color choices.

Creativity blocking reasons: Time, place, budget and commissions and materials. Julia addressed all of these with historical references. Interesting note, red may be prevalent in quilts because women wore red petticoats. Many Australian quilts were made by men recovering from war wounds.

Julia uses fabric she finds in thrift and charity shops. Her quilt guild also has a trash to treasures table. She recommends using up your orphan blocks or vintage blocks that you find at flea markets. Use them up. Not useful in a closet.

Project Repat will make a t-shirt quilt for you. Fees start at a reasonable \$75 and gives lots of options on their website. ( [projectrepat.com](http://projectrepat.com))

Julia teaches online at Creative Sparks. Secrets to Using Silks. A couple of the products that she recommends:

EZ Piecing [www.ezpiecing.com](http://www.ezpiecing.com) Lighter fusible with accurate flying geese pattern printed on it.

Benart : Foundation by the yard [www.rossvilequilts.com](http://www.rossvilequilts.com) It is Indiana, order online.

Julia is very proud of her new book, "Patchwork Luxe", by C & T Publishing.

She will be teaching in person at Empty Spools March 2026, Upcycled Fabrics and hopes to see you there.

Thank you all for coming. Don't forget to sign up for workshops, participate in Philanthropy Day, November 2 and attend the next Quarterly meeting in February 2025.

Meeting adjourned: 12 :15 P.M.

Respectfully Submitted,

Pat Karasick

Acting Secretary

<u>International Computer Security Day</u> Nov. 30 <sup>th</sup>		<u>National Sundae Day</u> Nov. 11 <sup>th</sup>		<u>National Princess Day</u> November 18 <sup>th</sup>	
---	---	---	--	---	---

## **Next Executive Board Meeting**

The next meeting of the Executive Board will be held, November 3, 2024  
 All members of Westside Quilters are welcome to attend with prior notice to  
[Pres@WestsideQuiltersLosAngeles.org](mailto:Pres@WestsideQuiltersLosAngeles.org).

*Our Mission*

A new kind of guild organized for educational and charitable purposes; to promote cooperation and the exchange of ideas among quilters; to instruct members in methods and techniques of traditional and contemporary creative quilting; to serve mini-groups and their philanthropic endeavors within the community; to inspire personal achievement.

Officers 2022-2023

President	Terrie Dorio
Vice President	Pat Karasick
Secretary	Sonja Daniel
Treasurer	Karynn Dittmar
Program	Kathryn Pellman + more
Membership	Lisa Drew
Newsletter	Debbie Nussbaum
Philanthropy	Roberta Walley, Virginia Marshall, and Luann Jaffe
Website Manager	Sally Wright

Appointed Positions

<b>Hospitality</b>	
<b>Meeting Set-Up/Take-Down</b>	Anata Withrington and Prima Casetta
<b>Photographer</b>	Everyone
<b>President Emeritus</b>	Sally Wright

Mailing Address                      **Post Office Box 641925**  
    **Los Angeles, CA 90064**

**Website**

[www.WestsideQuiltersLosAngeles.org](http://www.WestsideQuiltersLosAngeles.org)

Facebook    We're on Facebook. Check out the banner on the WQ website home page (lower center).

iGive.com    This is another way to benefit WQ when shopping on the Internet. Here you need to register (the iGive.com logo appears in the lower center on the WQ website home page and links you directly to iGive.com). More than 800 Internet retailers participate (Barnes & Noble, Bed Bath & Beyond, Enterprise Rent-A-Car, Lancome -- to name a few). Follow the instructions at iGive.com.

Non-Profit Status    Westside Quilters is tax-exempt from Federal income tax under section 501(c)(3) of the Internal Revenue Code, and classified as a public charity under section 170 of the Code, according to the determination letter dated May 26, 2011 received from the Internal Revenue Service. The effective date of exemption is June 17, 2010. Donations to Westside Quilters are fully tax-deductible for individuals and other entities such as corporations, partnerships, trusts; Westside Quilters is qualified to accept tax deductible bequests and gifts or transfers of gifts.

F.E.I.N.    27-3145733  
 (Federal Employer Identification Number)

.....Happy Thanksgiving .....

